

Air Chain Hoists

0,125 - 100 T





Red Rooster

The Red Rooster range of hoists are widely used both *on- and off-shore*, throughout the world; typically in marine, shipbuilding, chemical and petrochemical, food, paint and papermaking industries, wherever reliability of performance and safety in use are paramount.

Red Rooster air chain hoists are compact in design and low in headroom. The hoists have infinitely variable speed, and are rated for continuous use. Another advantage of the air hoists is the soft start and stop. Air hoists do not impose shock loading during acceleration and deceleration. The Red Rooster air hoists are of compact construction with cast iron bodies for durability and safety.

Note!

The hoists may be of hook suspension or supplied with the options of manual or pneumatically driven trolleys. Load chain conforms to DIN 5684-8. All models are supplied with cord (C), which affords the user simple but precise control of the hoist. Additional options are pilot pendant (P) or light weight pendant (for applications in zone 1 areas). **Hoists from 0,5 tons and bigger are supplied with built-in load limiter.** All hoists are supplied with internal disc brake.

Design F.O.S. 5, proof load 1.5 x SWL, internal silencers, explosion proof motor, automatic upper and lower limit switches. **Spark resistant air chain hoists are available on request.**

Air trolleys

The air trolleys have a good price/quality ratio. The wheels are made of steel or bronze (on request). Constructed with sealed wheel bearings. Adjust-able to cover a range of beam flange widths. A worm gear box prevents run on.

Some users

Shell UK, BP, Marathon, Mobil, Unocal, ICI, Pfizer, P&O, Triumph, Rockwater, British Coal, Leyland DAF, Thyssen, Repsol, BASF.

Mini Hoists

Light, strong & compact



TCR-250

If you are looking for a technically advanced, flexible and compact air hoist to work in a variety applications you will find the TCR-range mini hoists light aluminium air hoists of industrial quality!

Advantages:

- * Well balanced
- * Built-in disc brake system
- * Explosion proof motor
- * No limit in lifting height
- * Precise position-finding afforded by variable lifting/lowering speed
- * Available both "hook suspension" and "trolley mounted"
- * Very portable

Type	Capacity tons	Lifting speed full load m/min	Lifting speed without load m/min	Air consumption full load l/sec	Weight kg
------	---------------	-------------------------------	----------------------------------	---------------------------------	-----------

TCR-125 C/DP	0.125	14.0	19.0	11.7	6.3
TCR-250 C/DP	0.25	9.3	19.0	11.7	6.3
TCR-500/2 C/DP	0.5	4.5	9.5	11.7	8.5

Detailed information on pages 9-10.

For example:

The headroom of the TCR-250 is 305 mm. Weighing only 6.3 kgs. (including 3 metres lift), the hoist will lift 250 kgs. at a speed of 9,3 metres per minute. Available with a cord control (C) or a pendant control with emergency stop (DP). Both variable speed.



TCR-125

Description	Model	Type	Max. m
Chain bag	*	SW-0	12
Chain bag	*	SW-00	20

TCR-250

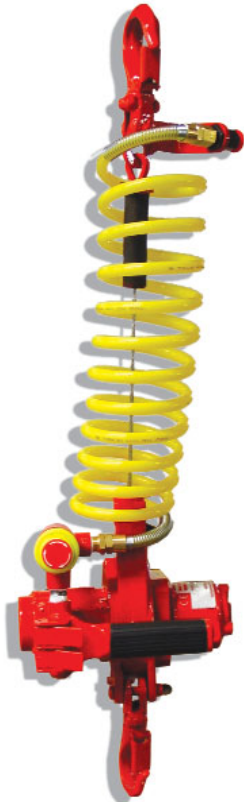
Description	Model	Type	Max. m
Chain bag	*	SW-0	12
Chain bag	*	SW-00	20

TCR-500/2

Description	Model	Type	Max. m
Chain bag	*	SW-0	6
Chain bag	*	SW-00	10

Compact Hoists

For material handling



TMM-140A

The red rooster compact hoists are excellent for material handling, particularly for production handling to and from bench level or for mating of component parts during assembly. The controls are mounted adjacent to the bottom hook, enabling the operator to precisely control the load whilst raising and lowering, with one hand.

The hoist operates up to two metres lift height (as far as a man can reach in comfort). Where the process requires the load to be raised, traversed and then lowered, the hoist may be combined with a trolley on an overhead runway or C track. Top and bottom end limits are included to prevent over-hoisting and over-lowering, whilst an Emergency Stop (red, mushroom head) is located immediately adjacent to the control levers (cutting off the air supply in the event of an emergency).

Type	Capacity tons	Lifting speed full load m/min	Lifting speed without load m/min	Air consumption full load l/sec	Weight kg
------	---------------	-------------------------------	----------------------------------	---------------------------------	-----------

TMM-140A	0.14	11.0	15.0	8	9
----------	------	------	------	---	---

Detailed information on pages 9-10.

The TMM-140A has a reversible handgrip for left or right hand operation. The handgrip is rubber covered. The raise and lower operating triggers afford the operator precise, variable speed control.



TMM-140A

1. Push buttons near the bottom hook.
2. It is, if the operator lifts the package himself.
3. Better comfort and safety for the operator.

Air Chain Hoists

0.25 - 6 tons



TCR-1000

TCR-2000

Red Rooster hoists have a cast steel body, and feature proportional speed control via the fail-safe control valve. Mechanical paddle action upper and lower limit switch prevents over hoisting and over lowering, whilst the bottom hook (with safety latch) is mounted on low friction bearings enabling it to rotate under load.

In standard form the hoist may be used in CENELEC Zone 2 hazardous areas (explosive gases), whilst all types are also available in "spark resistant" form for use in CENELEC Zone 1 hazardous areas. Full details of "spark resistant" hoists can be found on page 016 of this catalogue. The hoists are also available in "clean area" form for use in the pharmaceutical, food and research industries.

Type	Capacity tons	Lifting speed full load m/min	Lifting speed without load m/min	Air consumption full load l/sec	Weight kg
TCR-600250 C/P	0.25	14.0	19.0	21.6	30
TCR-500 C/P	0.5	10.5	20.5	25	31
TCR-1000/2 C/P	1	5.3	10.3	25	34
TCR-1000 C/P	1	6.0	11.3	25	35
TCR-2000/2 C/P	2	3.0	5.7	25	40
TCR-3000 C/P	3	2.8	5.4	33	69
TCR-6000/2 C/P	6	1.4	2.7	33	90

Detailed information on pages 9-10.

TCR-600250

Description	Model	Type	Max. m
Chain bag	*	SW-1	14
Chain bucket	**	A	7
Chain bucket	**	D	11
Chain bucket	**	E	17
Chain bucket	**	F	34
Chain bucket	**	G	46
Chain bucket	***	GB-600520/6	6
Chain bucket	***	GB-600520/12	12
Chain bucket	***	GB-600520/18	18
Chain bucket	***	GB-600520/24	24
Chain bucket	***	GB-600520/30	30
Chain bucket	***	GB-600520/36	36

TCR-500

Description	Model	Type	Max. m
Chain bag	*	SW-1	14
Chain bucket	**	A	7
Chain bucket	**	D	11
Chain bucket	**	E	17
Chain bucket	**	F	34
Chain bucket	**	G	46
Chain bucket	***	GB-600520/6	6
Chain bucket	***	GB-600520/12	12
Chain bucket	***	GB-600520/18	18
Chain bucket	***	GB-600520/24	24
Chain bucket	***	GB-600520/30	30
Chain bucket	***	GB-600520/36	36

TCR-1000/2

Description	Model	Type	Max. m
Chain bag	*	SW-1	7
Chain bucket	**	A	4
Chain bucket	**	D	6
Chain bucket	**	E	8
Chain bucket	**	F	18
Chain bucket	**	G	23
Chain bucket	***	GB-601040/3	3
Chain bucket	***	GB-601040/6	6
Chain bucket	***	GB-601040/9	9
Chain bucket	***	GB-601040/12	12
Chain bucket	***	GB-601040/15	15
Chain bucket	***	GB-601040/18	18

F / G / FF / GG = from these lengths a counter weight is necessary / Other chain bags are available on request.

Air Chain Hoists

10 - 100 tons



RRI-625040

Red Rooster specialises in the design of hoisting systems tailored to meet specific applications. Internal silencing, fail-safe totally enclosed disc brake, sealed precision epicyclic gearbox, precision machined and hardened load and idler wheels and line pull limiter serve to make the hoists safe, reliable and well engineered production tools. All pendant control types are available with an emergency stop (red, mushroom head) to meet European Machinery (Safety) Directive. All types may be supplied with hook top suspension or combined with runway trolleys.

Type	Capacity tons	Lifting speed full load m/min	Lifting speed without load m/min	Air consumption full load l/sec	Weight kg
------	---------------	-------------------------------	----------------------------------	---------------------------------	-----------

RRI-610040 C/P	10	1.5	2.5	90	190
TCR-12000 C/P	12	0.9	1.5	33	170
TCR-15000 C/P	15	0.7	1.0	33	221
RRI-615060 C/P	15	1.0	1.4	90	190
RRI-620080 C/P	20	0.8	1.2	90	240
RRI-625040 C/P	25	0.8	1.3	120	320
RRI-635060 C/P#	37.5	0.6	1.0	120	850
RRI-650080 C/P#	50	0.4	0.7	120	1.100
RRI-675120 C/P#	75	0.25	0.4	120	1.500

Detailed information on pages 9-10.



TCR-1000

Description	Model	Type	Max. m
Chain bag	*	SW-2	10
Chain bucket	**	AA	7
Chain bucket	**	DD	10
Chain bucket	**	EE	15
Chain bucket	**	FF	28
Chain bucket	**	GG	40
Chain bucket	***	GB-601020/3	3
Chain bucket	***	GB-601020/6	6
Chain bucket	***	GB-601020/9	9
Chain bucket	***	GB-601020/12	12
Chain bucket	***	GB-601020/15	15
Chain bucket	***	GB-601020/18	18

TCR-2000/2

Description	Model	Type	Max. m
Chain bag	*	SW-2	5
Chain bucket	**	AA	3
Chain bucket	**	DD	5
Chain bucket	**	EE	7
Chain bucket	**	FF	14
Chain bucket	**	GG	20
Chain bucket	***	GB-602040/3	3
Chain bucket	***	GB-602040/6	6
Chain bucket	***	GB-602040/8	8
Chain bucket	***	GB-602040/12	12
Chain bucket	***	GB-602040/15	15
Chain bucket	***	GB-602040/18	18

TCR-3000

Description	Model	Type	Max. m
Chain bag	*	SW-3	6
Chain bucket	***	GB-603020/3	3
Chain bucket	***	GB-603020/6	6
Chain bucket	***	GB-603020/8	8
Chain bucket	***	GB-603020/12	12
Chain bucket	***	GB-603020/15	15
Chain bucket	***	GB-603020/18	18

TCR-6000/2

Description	Model	Type	Max. m
Chain bag	*	SW-3	3
Chain bucket	***	GB-606040/3	3
Chain bucket	***	GB-606040/6	6
Chain bucket	***	GB-606040/8	8
Chain bucket	***	GB-606040/12	12
Chain bucket	***	GB-606040/15	15
Chain bucket	***	GB-606040/18	18

Air Chain Hoists

0,125 - 100 tons



Type	Capacity tons	Lifting speed full load m/min	Lowering speed full load m/min	Lifting speed without load m/min	Lowering speed without load m/min	Number of chain falls	Air consumption full load l/sec	Inlet thread	Hose diameter mm
TCR-125 C/DP	0.125	14.0	16	19.0	13	1	11.7	PT 3/8"	13
TMM-140A	0.14	11.0	15	15.0	11	1 (wire-rope)	8	PT 3/8"	13
TCR-250 C/DP	0.25	9.3	17	19.0	13	1	11.7	PT 3/8"	13
TCR-600250 C/P	0.25	14.0	18	19.0	13	1	21.6	PT 1/2"	13
TCR-500/2 C/DP	0.5	4.5	8,5	9.5	6,5	2	11.7	PT 1/2"	13
TCR-500 C/P	0.5	10.5	17,9	20.5	13,4	1	25	PT 1/2"	13
TCR-1000/2 C/P	1	5.3	9,0	10.3	6,7	2	25	PT 1/2"	13
TCR-1000 C/P	1	6.0	10,3	11.3	6,8	1	25	PT 1/2"	13
TCR-2000/2 C/P	2	3.0	5,2	5.7	3,4	2	25	PT 1/2"	13
TCR-3000 C/P	3	2.8	4,6	5.4	3,3	1	33	PT 1/2"	19
TCR-6000/2 C/P	6	1.4	2,3	2.7	1,7	2	33	PT 1/2"	19
RRI-610040 C/P	10	1.5	2,3	2.2	1,8	2	90	PT 1"	25
TCR-12000 C/P	12	0.7	1,2	1.4	0,8	4	33	PT 1/2"	19
TCR-15000 C/P	15	0.6	0,9	1.1	0,7	5	33	PT 1/2"	19
RRI-615060 C/P	15	1.0	1,5	1.7	1,2	3	90	PT 1"	25
RRI-620080 C/P	20	0.8	1,2	1.2	0,9	4	90	PT 1"	25
RRI-625040 C/P	25	0.5	0,7	0.7	0,5	2	120	PT 1"	25
RRI-635060 C/P#	37.5	0.3	0,5	0.5	0,3	3	120	PT 1"	25
RRI-650080 C/P#	50	0.25	0,35	0.35	0,25	4	120	PT 1"	25
RRI-675120 C/P#	75	0.2	0,2	0.2	0,2	6	120	PT 1"	25

* Supplied as standard / + = on request / # = also available in shackle execution.
Note Chain, SMC filter and SMC lubricator are supplied on request.

All hoists are supplied as standard with 2 m. control, **with exception of type TMM-140A**; standard with cable, air hose, pilot pendant control and 2 m. height of lift.

C = cord control
 DP = direct pendant control with emergency stop
 P = pilot pendant control with emergency stop
 PB = 4 or 6 button control with emergency stop (on request)

Features of the **shackle execution** are a lower head room, lower weight, easier to load the hoist and easy mounting by double pad eye.



RRI-610040

Weight kg incl. 3 m lift	Load limiter	Air trolley	4-button control with emergency stop (P2000/4E)	Chain size mm	Chain weight kg/m	Chain bag/ chain bucket	SMC Filter	SMC Lubricator
7	-	+	+	4.0 x 12.0 (HD)	0.35	+	EAF3000-F03	EAL3000-F03
9	-	+	-	-	-	-	EAF3000-F03	EAL3000-F03
7	-	+	+	4.0 x 12.0 (HD)	0.35	+	EAF4000-F04	EAL4000-F04
30	-	+	+	6.3 x 19.1	0.9	+	EAF4000-F04	EAL4000-F04
8.5	-	+	+	4.0 x 12.0 (HD)	0.35	+	EAF3000-F03	EAL3000-F03
31	*	+	+	6.3 x 19.1	0.9	+	EAF4000-F04	EAL4000-F04
34	*	+	+	6.3 x 19.1	0.9	+	EAF4000-F04	EAL4000-F04
35	*	+	+	7.1 x 21	1.1	+	EAF4000-F04	EAL4000-F04
40	*	+	+	7.1 x 21	1.1	+	EAF4000-F04	EAL4000-F04
69	*	+	+	11.2 x 34	2.2	+	EAF4000-F04	EAL4000-F04
90	*	+	+	11.2 x 34	2.2	+	EAF4000-F04	EAL4000-F04
190	*	+	+	16 x 45	5.0	+	EAF5000-F06	EAL5000-F06
170	*	+	+	11.2 x 34	2.2	+	EAF4000-F04	EAL4000-F04
221	*	+	+	11.2 x 34	2.2	+	EAF4000-F04	EAL4000-F04
190	*	+	+	16 x 45	5.0	+	EAF5000-F06	EAL5000-F06
240	*	+	+	16 x 45	5.0	+	EAF5000-F06	EAL5000-F06
320	*	+	+	22 x 66	10.0	+	EAF6000-F10	EAL6000-F10
850	*	+	+	22 x 66	10.0	+	EAF6000-F10	EAL6000-F10
1.100	*	+	+	22 x 66	10.0	+	EAF6000-F10	EAL6000-F10
1.500	*	+	+	22 x 66	10.0	+	EAF6000-F10	EAL6000-F10

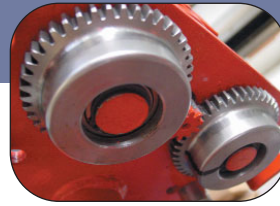
DIN5684-8 chain is standard for all air chain hoists, with exception of models TCR-125 and TCR-250. For these models Heavy Duty (HD) chain is available. All chain supplied on request.



SMC Lubricator

Air Trolleys

0,125 - 50 tons



Standard

For hoists	Type	For capacity in tons	Type air trolley	Flange width mm	Trav. speed full load m/min	Min. bend radius m	Number of wheels	Driven wheels	Air consumption l/sec	Inlet thread
TCR-125	ATP500	0.125	1N	56-178	0.12	1.5	4	2	13	PT 3/8"
TCR-250	ATP500	0.250	1N	56-178	0.12	1.5	4	2	13	PT 3/8"
TCR-500/2	ATP500	0.5	1N	56-178	0.12	1.5	4	2	13	PT 3/8"
TCR-600250	ATP600250/1	0.5	1N	56-170	0-9.5	1.5	4	2	25	PT 1/2"
TCR-500	ATP600520/1	0.5	2N	171-300	0-9.5	1.5	4	2	25	PT 1/2"
TCR-1000/2	ATP601040/1	1.0	1N	56-170	0-9.5	1.5	4	2	25	PT 1/2"
TCR-1000	ATP601040/2	1.0	2N	171-300	0-9.5	1.5	4	2	25	PT 1/2"
TCR-2000/2	ATP602040/1	2.0	1N	56-170	0-9.5	1.5	4	2	25	PT 1/2"
	ATP602040/2	2.0	2N	171-300	0-9.5	1.5	4	2	25	PT 1/2"
TCR-3000	ATP603020/1	3.0	1N	65-150	0-9.5	2.0	4	2	50	PT 3/4"
	ATP603020/2	3.0	2N	155-300	0-9.5	2.0	4	2	50	PT 3/4"
TCR-6000/2	ATP606040/1	6.0	1N	82-170	0-9.5	2.5	4	2	50	PT 3/4"
	ATP606040/2	6.0	2N	180-300	0-9.5	2.5	4	2	50	PT 3/4"
RRI-610040	ATP610040/1	10.0	1N	110-190	0-9.5	2.5	4	2	50	PT 3/4"
	ATP610040/2	10.0	2N	200-300	0-9.5	2.5	4	2	50	PT 3/4"
TCR-12000	ATP612080/1	12.0	1N	110-190	0-9.5	3.0	4	2	50	PT 3/4"
	ATP612080/2	12.0	2N	200-300	0-9.5	3.0	4	2	50	PT 3/4"
TCR-15000	ATP-615100/1	15.0	1N	110-190	0-9.5	3.0	4	2	80	PT 3/4"
RRI-615060	ATP-615100/2	15.0	2N	200-300	0-9.5	3.0	4	2	80	PT 3/4"
RRI-620080	ATP-620080/1	20.0	1N	110-190	0-9.5	3.0	4	2	80	PT 1"
RRI-615060	ATP-615060/2	20.0	2N	200-300	0-9.5	3.0	4	2	80	PT 1"
RRI-625040	ATP-625040/1	25.0	1N	110-190	0-9.5	3.0	4	2	80	PT 1"
	ATP-625040/2	25.0	2N	200-300	0-9.5	*	8	4	100	PT 1"
RRI-635060	ATP-635060/1	35.0	1N	110-190	0-6.3	*	8	4	150	PT 1 1/4"
	ATP-635060/2	35.0	2N	200-300	0-6.3	*	8	4	150	PT 1 1/4"
RRI-650080	ATP-635060/1	50.0	1N	110-190	0-4.0	*	8	4	150	PT 1 1/4"
	ATP-635060/2	50.0	2N	200-300	0-4.0	*	8	4	150	PT 1 1/4"
RRI-650080	ATP-650080/1	50.0	1N	110-190	0-6.3	*	16	8	200	PT 1 1/2"
	ATP-650080/2	50.0	2N	200-300	0-6.3	*	16	8	200	PT 1 1/2"

* = straight only

Air trolleys for lower minimum bending radius on request / Air trolleys with extremely low head room on request.

Spark Resistant



TCR-2000/2 with
ATPSR-602040/1

For hoists	Type	For capacity in tons	Type air trolley	Flange width mm	Trav. speed full load m/min	Min. bend radius m	Number of wheels	Driven wheels	Air consumption l/sec	Inlet thread
TCR-600250	ATPSR-600250/1	0.25	1SR	56-170	0-9.5	1.5	4	2	25	PT 1/2"
TCR-500	ATPSR-600520/2	0.5	2SR	171-300	0-9.5	1.5	4	2	25	PT 1/2"
TCR-1000/2	ATPSR-601040/1	1.0	1SR	56-170	0-9.5	1.5	4	2	25	PT 1/2"
TCR-1000	ATPSR-601040/2	1.0	2SR	171-300	0-9.5	1.5	4	2	25	PT 1/2"
TCR-2000/2	ATPSR-602040/1	2.0	1SR	56-170	0-9.5	1.5	4	2	25	PT 1/2"
	ATPSR-602040/2	2.0	2SR	171-300	0-9.5	1.5	4	2	25	PT 1/2"
TCR-3000	ATPSR-603020/1	3.0	1SR	56-150	0-9.5	2.0	4	2	50	PT 3/4"
	ATPSR-603020/2	3.0	2SR	155-300	0-9.5	2.0	4	2	50	PT 3/4"
TCR-6000/2	ATPSR-606040/1	6.0	1SR	82-170	0-9.5	2.5	4	2	50	PT 3/4"
	ATPSR-606040/2	6.0	2SR	180-300	0-9.5	2.5	4	2	50	PT 3/4"
RRI-610040	ATPSR-610040/1	10.0	1SR	110-190	0-9.5	2.5	4	2	50	PT 3/4"
	ATPSR-610040/2	10.0	2SR	200-300	0-9.5	2.5	4	2	50	PT 3/4"
TCR-15000	ATPSR-615100/1	15.0	1SR	110-190	0-9.5	3.0	4	2	80	PT 3/4"
RRI-615069	ATPSR-615100/2	15.0	2SR	200-300	0-9.5	3.0	4	2	80	PT 3/4"
RRI-625040	ATPSR-625040/1	25.0	1SR	110-190	0-9.5	3.0	4	2	80	PT 1"
RRI-625040	ATPSR-625040/2	25.0	2SR	200-300	0-9.5	*	8	4	100	PT 1"

* = straight only

Push & geared trolleys on request built on and hook on (also for spark resistant models).

All Red Rooster air trolleys are adjustable for various runway beam widths and types. Flanged trolley wheels running on sealed bearings are driven by an open precision machined pinion. The powerful rotary vane motor and enclosed gearbox afford the user proportional, smooth speed control and positive braking.

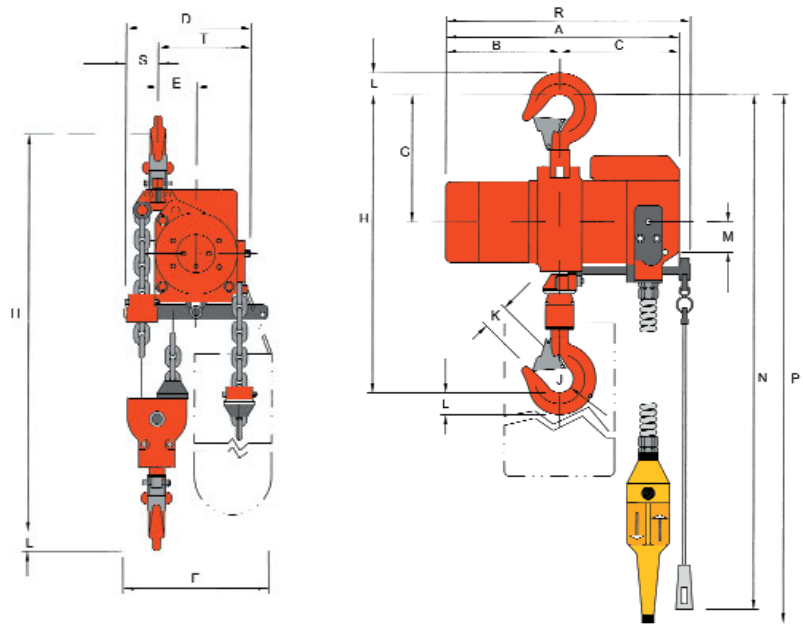
Anti-drop plates and anti-tip rollers are included as standard safety features; whilst rack and pinion drive, pneumatic end limits and swivel top suspension bearings (for use on board ship and for BOP handling on offshore drilling rigs), are available as options.

Standard trolleys are supplied with cast iron wheels. The spark resistant models have been manufactured with bronzen wheels. **Air trolleys for air chain hoists up to 100 tons on request.**



Trolley for
mini hoists

Dimensions

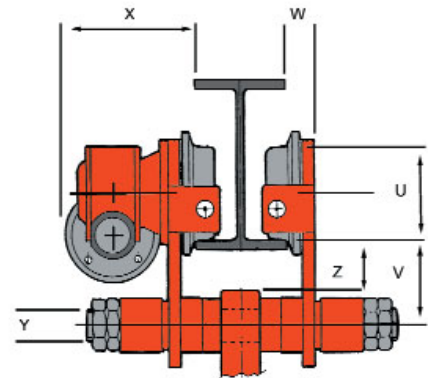
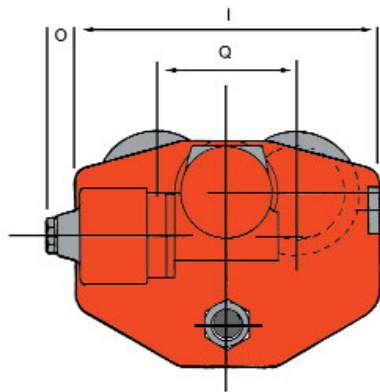


Air Chain Hoists

Type	A	B	C	D	E	F	G	H	J	K	L	M	N	P	R	S	T
TCR-125	230	110	120	95	20	102	240	305	36	29	15	-	2180	2580	230	35	60
TMM-140A	550	225	115	110	23	115	90	-	-	-	-	-	-	-	-	-	-
TCR-600250	321	156	165	149	32	212	177	412	40	34	29	40	2260	2650	355	40	109
TCR-250	230	110	120	95	20	102	240	305	36	29	15	-	2180	2580	230	35	60
TCR-500	321	156	165	149	32	212	177	412	40	34	29	40	2260	2650	355	40	109
TCR-500/2	230	110	120	140	40	105	240	365	36	25	*	-	2180	2580	230	45	95
TCR-1000/2	321	156	165	180	56	212	177	469	40	34	29	40	2260	2650	355	47	133
TCR-1000	321	156	165	157	32	212	177	416	40	34	29	40	2260	2650	355	40	117
TCR-2000/2	321	156	165	194	59	212	203	503	45	32	37	40	2285	2675	355	50	144
TCR-3000	430	202	228	245	43	212	249	563	50	41	45	40	2350	2850	464	47	168
TCR-6000	430	202	228	275	87	212	275	673	65	50	49	40	2350	2850	464	63	212

Type	B	C	H	K	R	S	T
RRI-610040	247	302	890	45	549	165	277
RRI-615060	247	302	1.250	85	549	180	290
RRI-620080	247	302	1.350	100	549	200	300
RRI-625040	335	375	1.400	80	710	165	275
RRI-635060	335	375	1.550	100	710	250	400
RRI-650080	335	375	1.980	100	710	250	350
RRI-650080**	335	375	1.505	-	710	250	350

* L top = 17 / L bottom = 23
 ** Shackle execution



Air Trolleys

Capacity tons	Number of wheels	Weight kg	I	Q	U	V	W	X	Y	Z
Mini's	4	9	250	100	60	42	20	130	20	22
0-2	4	27	230	106	70	67	27	140	35	27
3	4	40	320	148	100	90	29	142	35	45
6	4	71	460	216	150	100	38	220	45	55
10	4	140	460	216	150	100	43	225	45	50
12	4	140	460	216	150	100	43	225	45	50
15	4	150	530	252	180	110	43	260	50	50
20	4	200	630	300	230	120	48	320	60	50
25	4	200	630	300	230	120	48	320	60	50
25	8	360	940	216	150	105	260	260	60	50
35	8	450	1100	252	180	125	320	320	70	50
50	8	620	1280	300	180	125	320	320	70	50
50	16	940	2060	252	150	125	260	260	70	50



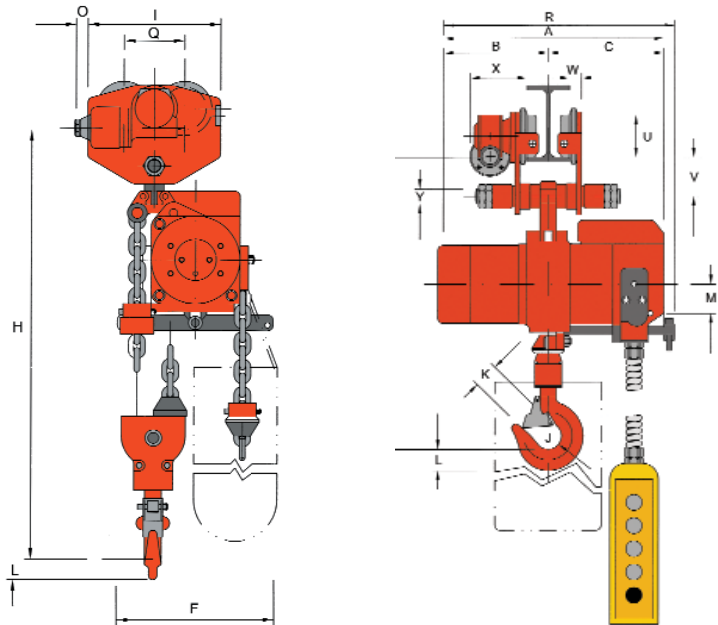
Which chain to use?

Standard
6,3 x 19,1
7,1 x 21
11,2 x 34
16 x 45
22 x 66

Heavy Duty
6,3 x 19,1 S
7,1 x 21 S
11,2 x 34 S
16 x 45 S
22 x 66 S

Red Rooster hoists are standard supplied with a galvanized chain according to DIN 5684-8. If the hoist is intensively operated, constantly max. loaded, or used for rental jobs, we advise to use the higher quality chain. Heavy Duty chain has a much higher resistance against wear. **Lubrication of the chain may increase the lifetime to 10 times.**

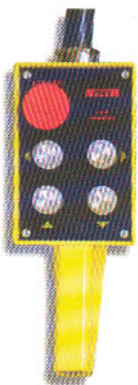
Dimensions



Hoist & Trolley combined

Type	A	B	C	H	J	K	L	M	R	U	V	W	X	Y
TCR-125	230	110	120	300	36	29	15	-	230	60	45	19	130	20
TCR-600250	318	153	165	453	40	34	29	40	330	70	67	27	140	35
TCR-250	230	110	120	300	36	29	15	-	230	60	45	19	130	20
TCR-500	318	153	163	453	40	34	29	40	330	70	67	27	140	35
TCR-1000/2	318	153	163	523	40	34	29	40	330	70	67	27	140	35
TCR-1000	323	156	157	440	40	34	29	40	340	70	67	27	140	35
TCR-2000/2	323	156	167	495	45	32	37	40	340	70	67	27	140	35
TCR-3000	430	226	202	620	64	41	48	43	443	100	90	29	142	45
TCR-6000	428	202	226	695	65	50	19	40	445	150	100	38	220	45

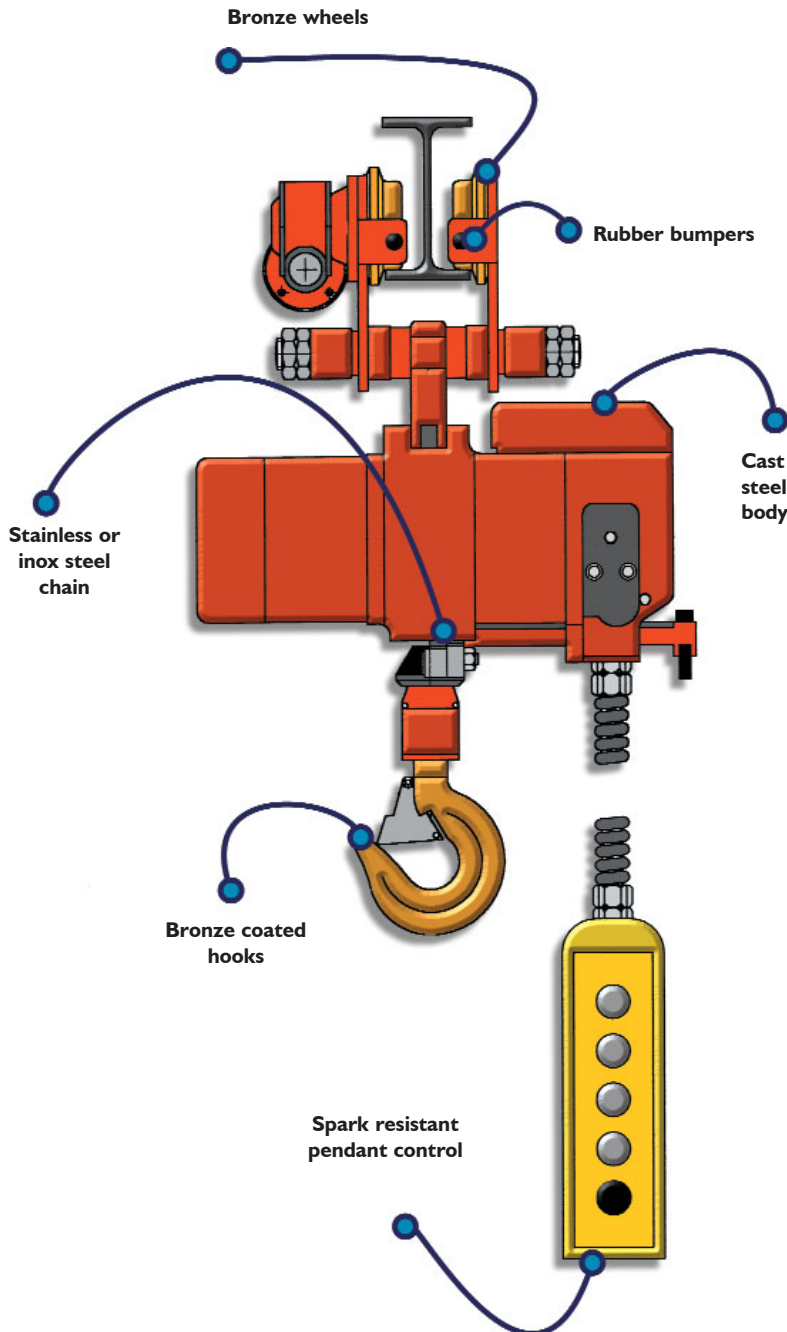
* Larger models are available on request.



4-button control to operate hoist and trolley at the same time.

All hoists are dynamically tested in our workshop with actual load. All overload tests are carried out with 150% x S.W.L.. Hoists are supplied with a test certificate. The test bench itself has been calibrated and certificated by TNO certification and meets the requirements according to NEN-EN 818.

Spark Resistant



In production- and storage operations, inflammable gases vapours and mist combined with air, may form an explosive atmosphere. Such gases and vapours are classified under European norms. These hoists are therefore supplied with an "ATEX" certificate.

Our standard hoists are classified as follows: E Ex II A T6 CE Ex II 3GD (and may be used in zone 2).

Our spark resistant hoists are classified as follows: E Ex IIA/IIB T6 CE Ex II 2GD (and may be used in zone 1).

Exceptions are the Mini hoists TCR-125, TCR-250, TCR-500/2 and TMM-140A.

Our spark resistant hoists are executed with:

- * Cast steel body ^{1) 2)}
- * Bronze coated hooks ³⁾
- * Stainless or inox steel chain
- * Spark resistant pendant control
- * Heavy Duty rubber collision bumpers on trolley
- * Bronze wheels on trolley
- * Nicked hook used for the food industry

¹⁾ Copper plated sprockets on request

²⁾ Marine paint on request

³⁾ Stainless steel on request

Our spark resistant hoists are widely used in a.o. the off-shore, on-shore, (petro)chemical industry, mining, paint industry, paint spraying, chemical production and -storage, pharmaceutical industry, tank-cleaning.

Some applications: Offshore, Onshore, Shipyards



BOP handling system

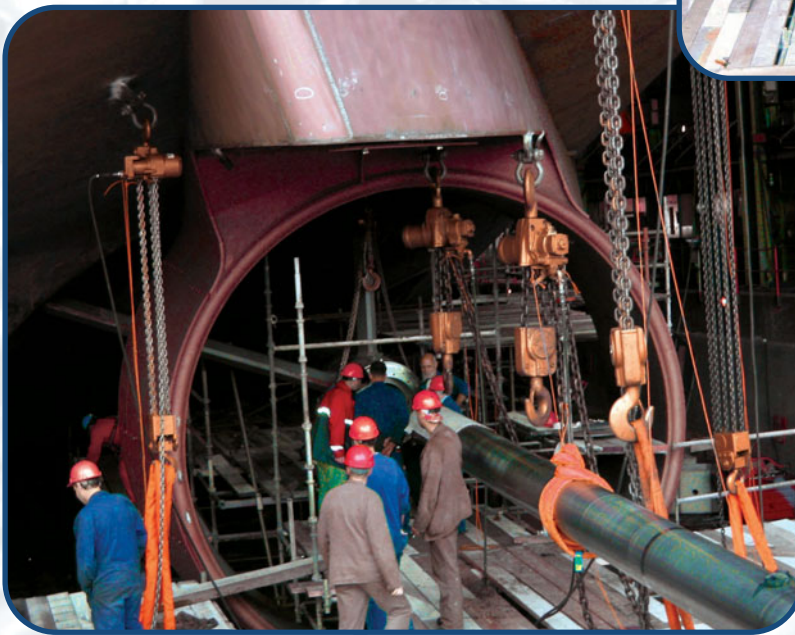
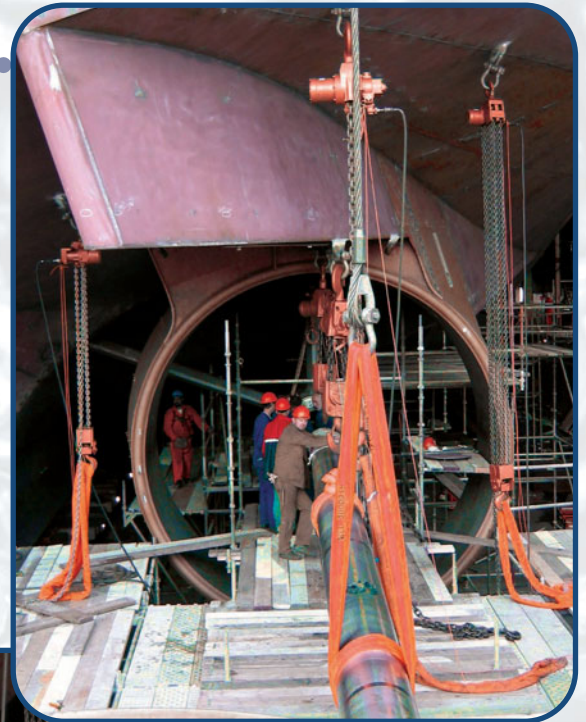


25 tons deflecting test



Detail hoist and trolley





Power and precision are required for mounting a propeller in a ship.

Red Rooster air hoists provide concentrated power with sensitive controls.

